

[HOME](#)[TECH](#)[GAMING](#)[LIFE](#)[COMMUNITY](#)[Contact us](#)[Dell Monitor Deals](#)

Save on UltraSharp Dell Monitors. Visit
Dell & Save on Great Deals!
www.Dell.com/Monitors

[LG's LCD Monitor/TV](#)

An LCD TV & Computer Monitor In One
LG's Multi Function LCD Monitor!
www.LGE.com

[Bandwidth Monitoring Tool](#)

Monitor bandwidth & Network Traffic
Reports, Alerts, Email, SNMP Traps
netflowanalyzer.com

[Smart Toxic Gas Monitor](#)

Plug/Play sensor 10' extender cable NH3,
CO, CL2, H2S, PH3, SO2, AsH3
www.singlegasmonitor.com

Ads by Google

[Icrontic Forums](#) > [Tech: Hardware](#) > [Graphics](#)[Start New Discussion](#)[DELL P1110 monitor too bright](#)

To reply on Icrontic, [register now](#).

It only takes 30 seconds.

Have an account? Sign in for less ads.

Username

Password

[Forgot?](#)

☐ Remember me

[Log in](#)

Page 12 of 20 [« First](#) [<](#) [2](#) [8](#) [9](#) [10](#) [11](#) **12** [13](#) [14](#) [15](#) [16](#) [>](#) [Last »](#)

[Reply to Discussion](#) [Options](#)

Mavrick

New to the neighborhood

Mavrick

2 Posts

3 Sep 2006, 8:51pm

Quoting **cobain94**

Did you tried this?It worked for me.HP P1110

HP P1110 Model D2847 (Nokia) Service Mode

(edited the original message found in this topic cause it didn't worked,This way it will work)

Access to the service mode is as follows :

- 1) Turn the monitor off(powerbutton).
- 2) Push the menubutton holding it down, Power on the monitor.
- 3) Release the menubutton.
- 4) Push the menubutton again to acces servicemode.

The password is 7711

Many thanx to all posters..

I tried that and it just brought up the original menu and did not ask me to put in any password or give me any extra options for service mode. Unfortunately it doesn't appear to be the same on the Dell P1110 monitor 😞

[Reply with Quote](#)

[Ads by Google](#)[Monitor](#)[Monitor Serial Port](#)[RS232 Cable](#)[DB9 Cable](#)**Mark-Webber**

New to the neighborhood

Mark-Webber

2 Posts

5 Sep 2006, 3:27am

Hi all, I have been reading this thread now for a few days and decided to sign up =)

I have now installed Windas, made the cable and have it all working.

What I would like to know is if anyone with a Dell P992 that is fully functional could send me a copy of thier dat file. The monitor I have here was a mess when I recieved it. But thanks to this thread I have sorted most of it out. The main problem now seems to be the timings are all over the shop. They were all set to 128 (i asume the default) when I first got it.

Thanks in advance, and I am looking forward to being on the boards with you all.

[Reply with Quote](#)

[Nurulwai](#)

New to the neighborhood

Nurulwai

1 Posts

14 Sep 2006, 8:57pm

I too have an issue with bright monitors (though nowhere near as severe as some in this thread), but I have a cable being shipped to me at the moment so I can fix that without too much hassle - I hope.

The question I have is regarded some faint vertical lines (not the two horizontal ones). They appear across the image as:

Code:

```
| | | | | | | | | |
```

(Fantastic ascii art, I know).

Imagine the two || together are a thicker line. They are faint and run across the whole screen. They do this on two P991 monitors so it's not a specific thing. It's not too noticable except in when playing games, and then it gets annoying.

What causes this? Is it fixable?

The monitors look "OK" at 20 brightness, 90 contrast. I'm hoping playing with the G2 will allow me to get some better definition.

[Reply with Quote](#)

[FW900Fan](#)

New to the neighborhood

FW900Fan

2 Posts

15 Sep 2006, 10:05pm

Hello, I'm a new User of a FW900. I got it to work, with windas. But ist not so good. The contrast is weak. I only changed G2 vom 113 to 90. (before the screen was very green and had green retrace lines)

Now my question: Can anyone send me his windas dat-file form a good FW900? So I can check it.

Thank you for your help.

FW900Fan

[Reply with Quote](#)

[Rob_Landry](#)

New to the neighborhood

Rob_Landry

2 Posts

18 Sep 2006, 2:23am

I'd just like to say thanks to P991 and all here who have contribited to help make this work. I ordered my cable off e-Bay and managed to get WINDAS to work but I have one question. When saving and uploading the .DAT file, is the monitor supposed to blank out temporarily? My Dell P1110 blanks out for approx. 15-30 seconds and was just wondering if this was normal.

[Reply with Quote](#)

[FW900Fan](#)

New to the neighborhood

FW900Fan

2 Posts

18 Sep 2006, 10:56am

Quoting **Rob_Landry**

...When saving and uploading the .DAT file, is the monitor supposed to blank out temporarily? My Dell P1110 blanks out for approx. 15-30 seconds and was just wondering if this was normal.

Hi,
normally yes, but you should use a [computer](#) with 2 monitors, or a second computer with a separat display.

If you are uploading the new .dat-file and the is an error, than you can't load up your old one.

I forgot to insert a "Blank" in the dat.file from changing G2 113 to 90.

If windas sends an error, screen will be blank until, you upload the old .dat-file.

FW900Fan

[Reply with Quote](#)

[Rob_Landry](#)

New to the neighborhood

Rob_Landry
2 Posts
19 Sep 2006, 12:30am

Thanks for confirming. I was able to reduce my G2 slightly. Mine was at 174 and I reduced it to 160 and it appears better with my brightness set at 40. Of course I still have to calibrate the monitor to see how it works out as my grey scales now appear to have a slight color cast in the lower values.

I tried playing around with some of the other features, but didn't want to venture too far until I know what each setting does. The user manual is pretty vague.

One strange thing I noticed is that with the cable attached to the monitor, I can see very faint scan lines appear whenever I use the OSD (I had planned on leaving the cable attached permanently for future use as it's such a PITA to wedge in that hole). Anyone ever notice this before? My cable is the one from e-Bay and when it arrived, two of the wires (black and white) were missing their labels, so I'm not completely sure which one is the ground (the others were labeled). I e-mailed the seller but have not heard back. I tried both as a GND and WINDAS works successfully either way, but it would be nice to know which is the true GND wire.

[Reply with Quote](#)

Isolcj
New to the neighborhood
Isolcj
1 Posts
24 Sep 2006, 5:09pm

I have adjusted my G2 with WINDAS and my Dell P1110 is much improved. However, with a dark window overlaying a lighter background, the scan lines "bleed" over into the background causing a shadow effect in the lighter background. Any ideas?


[Reply with Quote](#)

phaz
Getting settled in
phaz
5 Posts
29 Sep 2006, 10:47am

Quoting **Hornizuka**
Hi guys!

My [Sony](#) Multiscan CPD-G420 suffered from the same brightness + retrace line problems. I did the "Image Restoration" fix prior reading this thread. Everything went back to normal and the color is vibrant as ever. However after reading this thread the solution of using "Color Return" or "Image Restoration" isn't recommended, so i guess i'm very lucky this time. =D Anyway good luck to others.

the G420 (19n3 chassis i think) has a notorious problem with the deflection processing unit (IC 420) it probably needs to be replaced. not something for the faint hearted. it would require DAS alignment also.

oops my bad. i was thinking G400. not G420. but it does answer questions for those with N3 based units (G400, G500, GDM-5510, GDM-5410 and a host of others) 

[Reply with Quote](#)

phaz edited : 29 Sep 2006 at 10:58am .

phaz
Getting settled in
phaz
5 Posts
29 Sep 2006, 11:06am

Re: WinDas

Quoting **mrmazda**

I got lucky taking another look with a viewer in hex mode and figured out [the difference](#) that was causing the "save format different" error. Notepad was the editor I first tried to use to edit. I changed one byte, at 0x33e in the original file, from 0x34 to 0x30. For some inexplicable reason, notepad changed 4 other bytes in the file, 4 instances of x20 to 0x00, at 0x00F, 0x01F, 0x12F, and 0x13F. I fixed it using debug.

Now that I'm back to square one I have to figure out why dropping G2 doesn't help. This P991 is very blurry.

G2 changes brightness. this would cause a blurred picture. to adjust your focus. open the monitor up up adjust the two pots on the FBT. they control the focus. you dont even need DAS [software](#) to do this

[Reply with Quote](#)

phaz
Getting settled in
phaz

5 Posts

29 Sep 2006, 11:06am

Re: WinDasQuoting **mrmazda**

I got lucky taking another look with a viewer in hex mode and figured out the difference that was causing the "save format different" error. Notepad was the editor I first tried to use to edit. I changed one byte, at 0x33e in the original file, from 0x34 to 0x30. For some inexplicable reason, notepad changed 4 other bytes in the file, 4 instances of x20 to 0x00, at 0x00F, 0x01F, 0x12F, and 0x13F. I fixed it using debug.

Now that I'm back to square one I have to figure out why dropping G2 doesn't help. This P991 is very blurry.

G2 changes brightness. this wouldn't cause a blurred picture. to adjust your focus. open the monitor up up adjust the two pots on the FBT. they control the focus. you dont even need DAS software to do this

[Reply with Quote](#)

phaz

Getting settled in

phaz

5 Posts

29 Sep 2006, 11:17am

Quoting **Daxx**

Hi, I've been following this thread and performed the resistor mod on my Sony GDM-F500R and it has helped a lot. I have the ECS cable on order so when I get it I plan to put the 10Mohm resistor back in and use WinDAS to fix it up.

Couple question concerning this monitor though:

I used the Nokia Monitor Test software and found that my convergence at the very top cannot be corrected. I can get red in but blue is out or vice versa. Also the top seems to be arched up slightly in the middle (same for very bottom of monitor too) and I don't have a geometry adjustment for that.

Secondly, my GDM-F500R takes 4 to 5 minutes to display an image after it is powered up in the morning. It is totally black for up to 5 minutes, then, ever so faintly, the image starts to appear and then brightens up normally. It seems something is taking a VERY long time to warm up. If I power down the monitor briefly, then it will come back on in about 30 seconds, but if I power it down and let it totally cool, I'm back the the 5 minute wait time before the image even starts to appear.

Can anyone help with some answers? What to adjust or replace?

adjust nothing. replace entire monitor. long startup time sounds like a tired CRT. prohibitively expensive and time consuming to fix, even for a DIYer

[Reply with Quote](#)

walterkay

Icrontic Regular

walterkay

27 Posts

7 Oct 2006, 9:29pm

HI, new to group but excited I can find a fix to my bright retrace lines problem on my GDM-F500R. Downloaded all the WINDAS files and .dll's and can launch WINDAS and find my monitor and defeated the dongle thing, but.. when I first launch I get a stream of errors about Astro SG not used, communications error, and timing errors, before the WINDAS main window opens. Running XP. Want to buy the cable and continue, but not certain if this is a show stopper.

any inputs highly appreciated.

rgds

[Reply with Quote](#)

REDMAN

Getting settled in

REDMAN

5 Posts

16 Oct 2006, 5:51pm

I have a P1130 made in oct 2001, is there any way to get to the connectors with out removing the case. I was thinking about cutting a hole in the case to get to them. i had surgery on both hands, carpal tunnel and dont have the hand strength anymore 40% loss. thanks for any replys

[Reply with Quote](#)

WarCal

Getting settled in

WarCal

5 Posts

21 Oct 2006, 6:17am

The hardest part when removing the case is taking out the screws, once those are out it should take minimal hand strength to get the rest off. Just unlock the tabs with a flathead and then the case will basically slide right off.

I wouldn't recommend cutting a hole unless you're absolutely sure where to make the cut.

[Reply with Quote](#)

WarCal

Getting settled in

WarCal

5 Posts

21 Oct 2006, 6:18am

oops double post..

[Reply with Quote](#)

REDMAN

Getting settled in

REDMAN

5 Posts

23 Oct 2006, 1:59pm

Quoting **WarCal**
oops double post..

thanks will get the cable ordered and see if i can get it apart.

[Reply with Quote](#)

walterkay

Icrontic Regular

walterkay

27 Posts

24 Oct 2006, 4:06am

Anyone know where the connector on a Sony GDM-F500R is?

[Reply with Quote](#)

afropuff

New to the neighborhood

afropuff

1 Posts

28 Oct 2006, 2:49am

Solutions to common problems.

STOP!! READ THIS **FIRST** IF YOU ARE HAVING PROBLEMS!! **STOP!!**

Most of the posts throughout this 29 page thread are useless to solving problems..read this first before you search elsewhere.

DO NOT use windows notepad to change any values. Windows notepad changes the format of the DAT file. This will cause your DAT File to become corrupt and not flash your monitor.

Use Programmer's Notepad.

get it here: <http://www.pnotepad.org/download/> Just use the viewer in windas to find the value of your G2 and do a "find" within Pnotepad to locate the value..the first value you come to will be your G2 value (look at values around it for verification using windas viewer)

Also, this was the position of my P991 cables:

RXD *towards back cover*

TXD

VDC/VCC

GND *towards monitor screen*

another guy on here posted and had RXD and TXD mixed around for his P991 OR they are truly different. For mine, that's how it looked. Consider, as well, to get a hold of some needle nose pliers, because the pins on the cable I bought off ebay were very difficult to insert onto the service port of the monitor since all the pins on the cable were separate (like a computer case's wiring going to a mobo). BTW, my service port on my P991 was on the left side. There was a door that you remove to access it. I thought it was in the rear of the monitor for some reason and tried taking the case off because I couldn't locate it, but soon realized I didn't have to FYI!

ALSO!!..You do not have your cables connected properly or something else is wrong if you keep getting the COM port error. Change the order of your cables, make sure your cable works, and make sure your COM port works. I used COM1/Manual within windas and it worked fine.

For the ASTRO program. When I tried setting up the astro program, for some reason my computer was missing the file it was talking about (The error about MS-DOS or whatever I don't remember, but u will if you're having this problem). It should have been in my system32 folder. I searched my computer, found the file somewhere else and put it in my system32 folder and it installed!

My monitor turned off for about 30 seconds to save a DAT file and took about 60 seconds to load a DAT File (Monitor will turn off whilst save/load and will come back on when finished). YOU CAN USE ANOTHER MONITOR at the same time you are adjusting the one you want to fix. The monitor you are fixing DOES NOT need to be connected to your computer..only through the COM port. Having 2 monitors can help you see the progress and what's going on with your setup, but not needed and IMO not recommended. Only reason I had 2 monitors was because I couldn't figure out WTF was going on.

ALSO, before even attempting this, make sure you have access to a computer/laptop with a serial port OR go buy a serial-to-usb connector. Check your mobo BEFORE you buy the cable. Most newer mobos do not have a serial port.

Go here: <http://www.geocities.com/gregua/windas/>

For instructions on patching and using windas. That is the site I used for most of my installation until I realized it needed to be updated. Hence this post I made!

Hope this helps anyone. If I would have known this info, I coulda saved myself 4 hours!!!!!!

-afro

p.s. for anyone thinking of doing this, I highly recommend it! I set my G2 value down and my monitor does look brand new. I had a bad retrace problem where I could see all the retrace lines on my monitor. After G2 value was decreased, colors are more vibrant and NO more retrace lines, even when I get the monitor really bright.

[Reply with Quote](#)

Kwitko edited : 28 Oct 2006 at 6:57pm .

[hotpoco](#)

Icrontic Convert

hotpoco

16 Posts

28 Oct 2006, 6:09pm

Quoting **walterkay**

Anyone know where the connector on a Sony GDM-F500R is?

Hi walter,

I've got the same monitor with the "too bright" problem as well. I'm now just waiting for the RS232<->TTL cable I bought from eBay. I've also downloaded Windas.

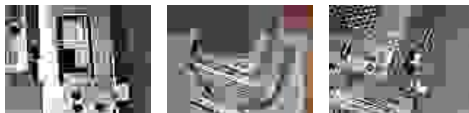
Opening the GDM-F500R is easy: Just remove four screws from the back and the back case comes off readily. No internal braces to defeat. The upper two screws have plastic covers that pops off using a small flat screwdriver.

Here are pictures:

The pins' labels (GND, STBY5V, RxD, TxD) I got from reading the screened labels on the other side of the circuit board. I am assuming the screened labels are correct; that the TxD and RxD are not reversed. We'll see...

[Hotpoco](#)

[Attached Thumbnails](#)



[Reply with Quote](#)

hotpoco edited : 28 Oct 2006 at 7:24pm .

[walterkay](#)

Icrontic Regular

walterkay

27 Posts

28 Oct 2006, 7:11pm

Thanks, very much appreciated, hated to have to junk this monitor. I have WinDAS fully functional now and recognizing the monitor, have an interface cable on order, and as an EE should be able to survive this. Will I really need to do any file editing as in the earlier post?
thx and rgds

Quoting **hotpoco**

Hi walter,

I've got the same monitor with the "too bright" problem as well. I'm now just waiting for the RS232<->TTL cable I bought from eBay. I've also downloaded Windas.

Opening the GDM-F500R is easy: Just remove four screws from the back and the back case comes off readily. No internal braces to defeat. The upper two screws have plastic covers that pops off using a small flat screwdriver.

Here are pictures:

The pins' labels (GND, STBY5V, RxD, TxD) I got from reading the screened labels on the other side of the circuit board. I am assuming the screened labels are correct; that the TxD and RxD are not reversed. We'll see...

Hotpoco

[Reply with Quote](#)

hotpoco

Icrontic Convert

hotpoco

16 Posts

28 Oct 2006, 7:12pm

Reading Daxx's and other's posts, it looks like the TxD and RxD are reversed. I am posting what I've read as the correct reading of TxD and RxD. I will find out first-hand once I get my RS232<->TTL cable.

[Attached Thumbnails](#)



[Reply with Quote](#)

hotpoco edited : 28 Oct 2006 at 7:23pm .

walterkay

Icrontic Regular

walterkay

27 Posts

28 Oct 2006, 7:14pm

Did you get WinDAS to work? I did with quite a bit of effort as it's not documented very well. Post on the forum if you get stuck and I'll try to create a better walkthrough.

[Reply with Quote](#)

hotpoco

Icrontic Convert

hotpoco

16 Posts

28 Oct 2006, 7:19pm

Haven't even done anything with WinDAS except to download the files and folders. I will get to that soon I hope. I will surely ask for help here should I get stuck. Thank you!

Quoting **walterkay**

Did you get WinDAS to work? I did with quite a bit of effort as it's not documented very well. Post on the forum if you get stuck and I'll try to create a better walkthrough.

[Reply with Quote](#)

walterkay

Icrontic Regular

walterkay

27 Posts

29 Oct 2006, 1:49am

I have the GDM-F500R schematic and it has Tx at pin 4 and Rx at pin 3, in agreement with the PCB though contrary to Daxx. I'll stay with the

Sony documentation to begin, but no harm can be done if they're swapped, just wont communicate which you'll discover the moment you try any activity on WinDAS.

Quoting **hotpoco**

Reading Daxx's and other's posts, it looks like the TxD and RxD are reversed. I am posting what I've read as the correct reading of TxD and RxD. I will find out first-hand once I get my RS232<->TTL cable.

[Reply with Quote](#)

[walterkay](#)

Icrontic Regular

[walterkay](#)

27 Posts

29 Oct 2006, 1:53am

From the schematic:

[Reply with Quote](#)

[chilli_pepper](#)

Getting settled in

[chilli_pepper](#)

5 Posts

30 Oct 2006, 5:09pm

Whoops - My Mistake - HELP!!!

Quoting **afropuff**

STOP!! READ THIS **FIRST** IF YOU ARE HAVING PROBLEMS!! **STOP!!**

DO NOT use windows notepad to change any values. Windows notepad changes the format of the DAT file. This will cause your DAT File to become corrupt and not flash your monitor.

Use Programmer's Notepad.

Ok guys,

Been following this thread for over a year now.

The otherday i recieved my cable and connected my to my P1110 successfully, backed-up my original settings etc etc as per the guide on the net...

HOWEVER - I used NotePad to edit the copy of my original settings - yeah i know, but i didnt check the forum for the latest info (as above)!

So i edited my G2 from 162 to 158, saved and uploaded.

On upload I got various messages:

1. Current model P1110 New model P1110(PCD) > Change to new Model?

I think i clicked yes

2. Mode data different

could only click ok

attempted to upload and then went black and stayed black.

Thought i'd wreaked it, but on using the 'save settings to file' command after the process was complete the monitor came back to life!

So - everything ok i thought - well yes and no.

The files that are created when saving settings are not readable in notepad, just a load of crap, they show up in word etc but thats no good...

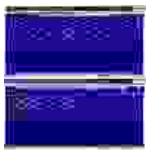
Tried loading the original settings, and I get 'Mode Data Different' about half way through the upload and can only click ok, it stops uploading and stays black, and then have to do a 'save settings to file' to get the monitor up again.

Viewer will show the info from the downloaded .dat as will edit.com

I have attached a screen shot of the just downloaded 'strange.dat' with a 'copy' of the original settings below it - obvious difference exists.

It is worth noting I CANNOT verify the original settings file has not been through a Notepad Save command and could therefore itself be corrupt!

Can anyone tell me how i can sort this out? 🤔

[Attached Thumbnails](#)[Reply with Quote](#)

chilli_pepper edited : 30 Oct 2006 at 5:20pm .

[hotpoco](#)
Icrontic Convert
hotpoco
16 Posts
31 Oct 2006, 3:24pm

Re: Whoops - My Mistake - HELP!!!

Hi chilli,

Notepad has been upgraded to work with Unicode or multibyte characters since ??? Windows XP or even Windows 2000. If you use it on an ASCII file, it will by default be changed from ASCII single-byte characters to double-byte Unicode. Which is why you can read it in Word which understands Unicode. Also, the Notepad-edited file doubles in byte-count size.

The upload to the monitor requires single-byte codes. If you sent it Unicoded file where each character is now two-bytes, everything is out-of-whack from the monitor's point-of-view.

Do as many has tolds us to do all here. Use Edit.com or any other editor (programmer's editor, hex editors, etc) that do not convert plain ASCII to Unicode. Or, use Notepad's Save As to retain the single-byte ASCII. Make sure that the byte-count of the original downloaded file DOES NOT CHANGE after you use Notepad's Save As !!!!!

If you are now stuck with a Notepad-edited Unicode file, and wish to get back the originally downloaded ASCII single-byte file, an easy way is to open it again in Notepad, and use File->Save As-> (select file type ANSI)->P1110.dat. Check that the byte-count of the new file is at least half that of the strange.dat. Right-click on the file->Properties to see the byte-count.

Good luck!

hotpoco

Quoting **chilli_pepper**

snip...

Viewer will show the info from the downloaded .dat as will edit.com

I have attached a screen shot of the just downloaded 'strange.dat' with a 'copy' of the original settings below it - obvious difference exists.

It is worth noting I CANNOT verify the original settings file has not been through a Notepad Save command and could therefore itself be corrupt!

Can anyone tell me how i can sort this out? 🤖

[Reply with Quote](#)

[walterkay](#)
Icrontic Regular
walterkay
27 Posts
31 Oct 2006, 5:58pm

Re: Whoops - My Mistake - HELP!!!

ANSI is default Save As in Notepad XP. Shouldnt be a problem to use then?

[Reply with Quote](#)

[hotpoco](#)
Icrontic Convert
hotpoco
16 Posts
31 Oct 2006, 7:02pm

Re: Whoops - My Mistake - HELP!!!

Quoting **walterkay**

ANSI is default Save As in Notepad XP. Shouldnt be a problem to use then?

My testing shows that it does not matter in our current discussion. NEVER NEVER USE NOTEPAD to edit the downloaded monitor file! Use Edit.com instead, or a programmer's editor or a hex file editor.

Here's what I did to test on a Windows XP SP1 machine.

1. Started on a file (let's call this P1110.dat) that is used to upgrade a device's firmware.
2. Made a copy of of this, Copy of P1110.dat.
3. Used Windiff to compare the P1110.dat and Copy of P1110.dat. Result: files are identical.
4. Opened Copy of P1110.dat in Notepad. Immediately File->Save.
5. Used Windiff to compare the P1110.dat and Copy of P1110.dat. Result: files are different!
6. Deleted Copy of P1110.dat, and made a fresh Copy of P1110.dat from the original P1110.dat.
7. Used Windiff to compare the P1110.dat and Copy of P1110.dat. Result: files are identical.
8. Opened Copy of P1110.dat in Notepad. Immediately File->Save As and with ANSI encoding.
9. Used Windiff to compare the P1110.dat and Copy of P1110.dat. Result: files are different!

CONCLUSION: DO NOT USE NOTEPAD regardless of ANSI encoding. And so I take back everything I've said in my previous post to chilli. Forget about Notepad. It messes up the contents of the file by APPLYING ANSI encoding to a data file!

hotpoco

[Reply with Quote](#)

chilli_pepper

Getting settled in

chilli_pepper

5 Posts

31 Oct 2006, 7:28pm

Re: Whoops - My Mistake - HELP!!!

hotpoco

Thanks for your advice, but I am still having trouble.

Basically, files now downloaded from the monitor are 10,068 bytes

The original settings file is 10,061 bytes

As these are the same i fear the original file may have been through a notepad change.

The original file will open in notepad and is fully legible

Any file downloaded from the monitor now is illegible in notepad, (its all strange characters) but fully legible in 'Programmers Notepad'

If i copy the original file and use the in notepad the byte size doesnt change, it seems they are already in ansi mode. ANSI is already present in the file type box, in the command.

However any file downloaded from the monitor, although illegible in notepad, if you use the file type is on Unicode, so I am guessing these files are in unicode. When I save them as ANSI format, they half in size, but then are illegible in Programmers Notepad and notepad and windas viewer.

My monitor is working, it seems, fine, and the G2 values have definetly made it a lot better (lowered from 162 to 150).

I'm just prefer to get everything back to how it should be...

Can you help me?

I have attached 2 .dat files, although i have had to change the extension to get them to post, so just rename them.

p1110_original.dat - the original file i downloaded from the monitor, I fear is also corrupt

p1110_311006.dat - the file i have just downloaded from the monitor.

Please help me!

Thanks guys!

Ps. Just a little annoyed the guide pages still say to use notepad - maybe this should be changed, so no-one else makes this error!

Quoting **hotpoco**

snip....

If you are now stuck with a Notepad-edited Unicode file, and wish to get back the originally downloaded ASCII single-byte file, an easy way is to open it again in Notepad, and use File->Save As-> (select file type ANSI)->P1110.dat. Check that the byte-count of the new file is at least half that of the strange.dat. Right-click on the file->Properties to see the byte-count.

Good luck!

hotpoco

Attached Files

File Type: odt [p1110_311006.odt](#) (9.8 KB, 62 views)

File Type: odt [p1110_original.odt](#) (9.8 KB, 51 views)

[Reply with Quote](#)

hotpoco

Icrontic Convert

hotpoco

16 Posts

31 Oct 2006, 7:59pm

Quoting **walterkay**

Did you get WinDAS to work? I did with quite a bit of effort as it's not documented very well. Post on the forum if you get stuck and I'll try to create a better walkthrough.

I've just finished installing WinDAS. Had minor gotchas, but was able to get over these. Now WinDAS starts up with Model Name: GDM-F500R selected.

I did get the ASTRO AG xxx, missing Mdl error messages. That was before I went to Config and set SG Name to Manual. Is this what you encountered as well? I am no longer getting the ASTRO AG xxx, missing Mdl messages.

Thanks for being around just in case I need your help!

Still waiting for my cable!

hotpoco

[Reply with Quote](#)

hotpoco

Icrontic Convert

hotpoco

16 Posts

31 Oct 2006, 9:16pm

Re: Whoops - My Mistake - HELP!!!

Quoting **chilli_pepper**

hotpoco

Thanks for your advice, but I am still having trouble.

snip...

My monitor is working, it seems, fine, and the G2 values have definitely made it a lot better (lowered from 162 to 150).

Please help me!

Thanks guys!

Hi chilli,

Check out my post #580 today. CONCLUSION: DO NOT USE NOTEPAD EVER for our work with monitor files. No no no. Throw away my advise to you earlier about Notepad and ANSI. Single-byte ANSI encoding is also BAD BAD BAD! Essentially, you do not want to encode it with ANSI nor Unicode!

In your present situation, since you have a currently working monitor, just download the monitor file and save it as your KNOWN-GOOD monitor

settings file. Back it up!. If you want to work on it, make a copy and work on the COPY only. After your edit, the file must be the same size as the original.

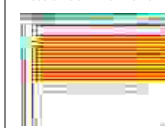
And don't even look at it using Notepad. Continue using the Programmer's Notepad you have been using. Whatever you download MUST be legible in the Viewer. If it is not, it is no good!

I've checked the files you've attached. They are the same size, but they do not have the same contents per WinDiff. I've attached the WinDiff window. See that I've noted extra values that offset the values in the lines that do not match. I can't tell which is good/bad. There are some HUGE values like 32767 which is all 1's in binary. Is this reasonable? I don't know. Could someone else share their known-good P1110 monitor settings so you could sort of tell. Know that no two P1110's monitor settings are interchangeable. Each one gets its own settings I understand.

I haven't gone as far as you have chilli, still waiting for the cable I bought, so I may be able to help you more later as I learn more. But there are many here who've gone through the whole thing. Keep asking, they may see your question and enlighten us all.

hotpoco

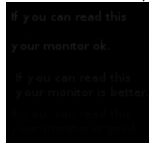
Attached Thumbnails



[Reply with Quote](#)

P991 DELL SONY

P991 tweaker, Sony WinDAS user



97 Posts

31 Oct 2006, 9:30pm

The Windas Howto Needs Updating?

People keep reminding me that my howto needs updating. Specifically in the following areas:

Editing the dat file

In particular, my reference to notepad seems most problematic. It had been causing problems since the start and yet I never removed it from the howto. It does work for 95/98/ME, if you still happen to use it. In either XP or 95/98/ME you can still use the *edit* command from the commandline to edit in ascii (IIRC).

Using a hexeditor is the safest route, though downloading another editor such as Vim (vim.org) may be easier.

Dos DAS/ Windas Scripting Language

There is a scripting language for the DOS Windas (and the windows windas) Which allows you to modify any register in realtime (just like in the procedures you can run). This would making adjusting the G2 and contrast much more efficient than at present. Furthermore, every possible register for geometry, color balance, and other previously impractical adjustmets (via the .dat editing method) could be made practical without having to go through the entire geometry or whitebalance procedures.

Xweebie had figured out how to script the Dos DAS, and so scripting the Windas should not be impossible. I have not looked into myself, but if anyone is interested in further customizing your monitor, this may be the direction you'd want to head in.

It may be easier to just monitor the serial line to figure out the low level commands that change registers, rather than to see how windas reads the monitor config files to generate serial output. However, if you only monitor the serial line, you may only be getting a picture of how your specific monitor communicates, other monitors may differ significantly.

The holy grail of this pursuit would be a program that displays test patterns and runs through the das procedures from the same computer. That way, anyone can run any of the DAS procedures with no additional hardware other than the DAS cable (except for the white balance procedure, which requires a colorimeter, though rough color balance could be made by tweaking the existing colorbalance settings.)

Increasing Contrast

Increasing the contrast is possible on all monitors with windas. Unfortunately, the exact register names differ depending on which monitor you are using (they are there, and the names are descriptive so look for them with the .dat viewer). And ofcourse, changing the contrast does very slightly throw your color off, so the proper way to adjust contrast is by doing the whole whitebalance procedure. Afordable colorimeters, such as the Spyder, can be bought and sold on ebay and other online auction sites. Make sure you have a method for displaying test patterns on your monitor while running windas and taking individual color measurements on another computer.

Even if you do change the contrast, you will also have to change the ABL_MAX_CON or something of the sort, else the ABL will limit your

maximum average contrast, and so the maximum contrast will be dimmed when viewing a bright screen in order to keep the average contrast throughout the whole screen down.

I understand the ABL has something to do with **keeping X-ray emissions under controll**. So be carefull and **do not completely disable the ABL**. Read the SONY bulletins from Rayman that I posted earlier in the thread. It details a modification of the ABL circuit, assuring the tech this mod will not have an effect on x-ray emmissions. In addition, when modifying the ABL values in the white balance procedure of windas, the program warns you with 'IMPORTANT wait untill the brightness stabilizes...'. Apparently,ABL settings are very serious.

If you know what the names of the registers that increased contrast were on your monitor, please email them and your monitor model to me. I want to add this information to the howto. Dont forget to look for the ABL settings, as these are directly linked to contrast.

Hardware problems

A smaller subset of people are having trouble with malfunctioning hardware. The classic brightness problem may (according to the internal sony bulletin from Rayman) be caused by a malfunctioning IC. Fortunately, this problem is remedied by changing the register controlling that IC.

Unfortunately, some ICs can have worse malfunctions which are not so easily remedied, and buying a replacement IC is prohibitively expensive (>\$200). As far as I know, the death of an irreplaceable IC does not spell the death of a monitor. Knowledge of the ICs primary function enables you to mimic it (just like the resistor mod, though in this case, you loose controll via the monitors MCU, and so forfeit auto color balance). I am not really experienced enough to make a valid statement about the complexity of these ICS. However, I think that many of them can be implemented with discretes.

We have the service manuals for these monitors, and we have working monitors to study, so with some enthusiasm, perhaps schematics for IC replacements bulit with discretes can be produced? I doubt ICs performing the same functions in different monitors are very different in design.

A very optimistic pipedream probably. But I can't imagine that these monitors are all that complicated.

Take the case off an older monitor that doesn't have OSD controls,has few adjustments, and doesn't have a large input scan range. There really isn't much to a CRT monitor. The latest greatest CRTs evermade don't change the fundamental concepts.

Speaking of which, I'm sure there are textbooks on circuit analysis, and maybe even a few on CRT design. There is all this comotion about obtaining service manuals detailing specifics of a certain model, but to my surprise, I have trouble finding a good 'all in one place' (think textbook) source for the general concepts that apply to every model.**Links to good electronics, circuit analysis and specific CRT info would be great. Names of books too.**

Something not Clear? Want me to add something? Want to add something of yours?

Please email me! I don't check my email very often, though this is the only one I have.

gregua@yahoo.com

Or better yet, join my IRC channel:

Server: LosAngeles.CA.US.undernet.org Port: 6667 Channel: #mets

My nick on IRC is Entropic. You should be able to reach me from any undernet.org IRC server, asuming no netsplits exist.

Or simply post what you want to add to this thread.

My howto is now the #1 google hit for "sony windas" , and so if you have any additional information on windas, I'd like to make it accesible. If you think you can fix something, go ahead, fix it and email me the new version and I'll post it. Or just tell me what you want changed.

The biggest thing that needs to be fixed is the reliance on the windas software. The liscence agreement is no where to be seen, and so this prohibits me from posting the howto to shortmedia. This could be quite a task, so I don't expect this to be resolved by myself or anyone soon.

[The Windas HowTo](http://www.geocities.com/gregua/windas/)-Still very much alive, but needs your help to evolve overtime and survive!
(<http://www.geocities.com/gregua/windas/>)

I know I've promised a section on CRT physics, months and months ago, well, I haven't forgotten atleast 😊

Thanks to all who continue to support others and fill in for the howto after their own monitor problems are fixed! 🤖

Remember, this is your howto, all of the information in it was put together from this thread! Let's keep continue to pool our knowledge here at Short-Media!

[Reply with Quote](#)

P991 DELL SONY edited : 31 Oct 2006 at 11:52pm . Reason: Adding to previous post as I had more to say and I didn't want to fill the forum with tiny posts

hotpoco

Icrontic Convert

hotpoco

16 Posts

31 Oct 2006, 9:59pm

Re: Whoops - My Mistake - HELP!!!

Quoting **P991 DELL SONY**

Yeah, I did the howto on Windows 95/98/ME, unfourtunately, the WINXP notepad is different and doesn't write files in raw ASCII. If worse comes to worse just use a hexeditor. That is a shame though, as the file seems meant to be text edited, or at least human readable. Else the values would have been stored as bytes (eg. A would be 65, space would be 20, etc.)

I understand. I was surprised myself with the change in Notepad's behavior. There should now be enough here to steer people away from using

Notepad in Windows XP.

It doesn't take away from the primary meat of the software and the HowTo's. And for that THANK YOU VERY MUCH **P991 DELL SONY!** I'm eagerly looking forward to bringing my F500R back to life in another few days.

hotpoco

[Reply with Quote](#)

chilli_pepper

Getting settled in

chilli_pepper

5 Posts

31 Oct 2006, 10:54pm

Re: Whoops - My Mistake - HELP!!!

Ok guys,

So anyone think they can help me out with a known good, un tampered P1110 .dat file? (and one that hasnt even been opened with notepad!!!

so i can compare and correct my files? Hopefully then they should upload without the errors!

I may need someone to help me out correcting my files though! I'm very new to this...

Thanks again

Chilli_P

[Reply with Quote](#)

ken1414

New to the neighborhood

ken1414

1 Posts

1 Nov 2006, 5:00pm

Hi

looked through this forum and hope you can help me fix my P1110 monitor which has the too bright problem.

I have set up the WINDAS software on my machine without any problems.

Got hold of the appropriate cable to connect my monitor to my serial port.

Now I am a bit stuck. The cable I have has 5 outlets on it labelled. GND, RXD, TXD, RTS, VCC.

Found the four pins on the back of the monitor I should connect the cable to.

Problem is which cable outlet goes on which pin on my Dell P1110 monitor as the pins don't seem to be marked and I can't see anything in this forum which tells you which is which!

Thanks for any help

Ken

[Reply with Quote](#)

chilli_pepper

Getting settled in

chilli_pepper

5 Posts

1 Nov 2006, 5:27pm

Quoting **ken1414**

Hi

looked through this forum and hope you can help me fix my P1110 monitor which has the too bright problem....

...and I can't see anything in this forum which tells you which is which!

Ken

As per post #438

Top to bottom as you face the back of the monitor.

GND

VCC (+5)

TXD
RXD .



Just DON'T USE NOTEPAD - EVER - EVER - EVER!!!

BTW - when you download your settings from the monitor could you please email me the file to chilli_pepper@ntlworld.com - as I have corrupted my original file with notepad, and need something to compare with so I can sort it out (see above posts FYI)

Cheers!!

Chilli_P

[Reply with Quote](#)

[hotpoco](#)
Icrontic Convert
hotpoco
16 Posts
[3 Nov 2006, 1:44am](#)

Hi Walter,

I've received my cable and hooked up everything. Success! My over-bright problem with visible retraces are gone! Looks like I need to redo the white-balance however now...

I've semi-permanently connected the RS232<->TTL cable to the ECS port and just let the RS232 connector hang out the back of the monitor so I could tweak it further if necessary without having to keep opening/closing this beast.

For documentation, I've taken these pictures:

hotpoco

[Attached Thumbnails](#)



[Reply with Quote](#)

hotpoco edited : 4 Nov 2006 at 8:22pm .

[hotpoco](#)
Icrontic Convert
hotpoco
16 Posts
[3 Nov 2006, 1:52am](#)

Now that the over-bright / too bright with visible retrace problem is solved, I have a white balance problem to solve. The image is too red.

So I tried the COLOR->EASY->Image Restoration (which requires a 30-minute warm-up), and voila! The white balance problem is now gone too!

My monitor is as good as new!

hotpoco

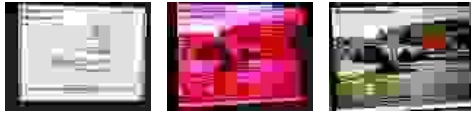
[Reply with Quote](#)

[hotpoco](#)
Icrontic Convert
hotpoco
16 Posts
[3 Nov 2006, 2:35am](#)

Here are Before and After pictures:

Now that G2 is at 90, I went for Image Restoration to fix the white balance:

hotpoco

[Attached Thumbnails](#)[Reply with Quote](#)

hotpoco

Icrontic Convert

hotpoco

16 Posts

4 Nov 2006, 7:02pm

FYI:

I've found the SONY Factory Service Invoice. Have a look at the evaluation I was sent home with.

Did they know that it can be fixed with WindAS but just would not fix it? Why? Would they not have had the CONFIDENTIAL SONY service bulletins explaining the problem and the fix? Clearly the problem is NOT the CRT tube. Why did they tell me that "this monitor requires a new CRT" tube?

What did most other people do when told that it could not be fixed? It occurred to me to say to them: "Kindly dispose of it for me." But I was unwilling to let it go just like that. Glad I drove over and took it home. Otherwise, someone would have a perfectly working >\$1,000 monitor for free.

[Attached Thumbnails](#)[Reply with Quote](#)

hotpoco edited : 4 Nov 2006 at 8:34pm .

thatbox

New to the neighborhood

thatbox

2 Posts

7 Nov 2006, 1:07am

I love you guys. My P1110, which I saved from a university computer lab junk heap, came with TRASH written on the top with Sharpie. But! It is TRASH no longer, thanks to all of you.

I got my cable from Digital Nemesis, in Australia, and it took about a week for them to get it to me in the US. Worked perfectly.

Here's an archive of Windas as I used it - all of the DLLs in the right folder and the ActiveX batch thing in its own directory alongside it. It'll stay online until someone sends me a cease and desist, which I doubt will ever happen. I didn't clean it up in any way or anything, but it's got everything I needed right in there, as far as I know!

[Windas, 1.62MB .zip](#)[Reply with Quote](#)

prayingmantis

New to the neighborhood

prayingmantis

1 Posts

10 Nov 2006, 3:32am

Sony CPD-G520 question

Hi everyone,

First off, this was such an incredible help to me. Had a CPD-G520 that I was practically ready to get rid of, due to the fact that it was incredibly bright. Following the Windas procedure, everything is under control.

Except for one small thing.

Since using Windas, I have only been intermittently able to get into the monitor's on-screen menu. Most of the time, it displays the green lock key in the bottom left corner and I have no access to any of the controls. I read here that someone was able to bypass this by somehow cycling the monitor on and off, but nothing has worked for me so far.

If anyone happens to know a way to get around this, or has experienced something similar, please let me know.

Thanks again for all of the help!

-Chris

[Reply with Quote](#)

[thatbox](#)

New to the neighborhood

[thatbox](#)

2 Posts

11 Nov 2006, 7:18pm

Re: Sony CPD-G520 question

Quoting [prayingmantis](#)

Hi everyone,

First off, this was such an incredible help to me. Had a CPD-G520 that I was practically ready to get rid of, due to the fact that it was incredibly bright. Following the Windas procedure, everything is under control.

Except for one small thing.

Since using Windas, I have only been intermittently able to get into the monitor's on-screen menu. Most of the time, it displays the green lock key in the bottom left corner and I have no access to any of the controls. I read here that someone was able to bypass this by somehow cycling the monitor on and off, but nothing has worked for me so far.

If anyone happens to know a way to get around this, or has experienced something similar, please let me know.

Thanks again for all of the help!

-Chris

Go to Adjustment > Procedure and then look for Finalize. Tell it yes, that's what you want to do, and then once it's done it you're back in menu business.

[Reply with Quote](#)

[martico](#)

New to the neighborhood

[martico](#)

1 Posts

14 Nov 2006, 7:49am

I was just about to give up in despair as could find nothing on the web to fix the problem so well described here, and then before I could get around to doing the resistor change my PC went caput and moreover the process seems to have put my P991 display into permanent power save mode.

Ive tried with a couple of known working laptops to drive the display (they still work on a different display) and it just sits there with the amber led flashing. I tried the manual suggested methods which indicate that turning it off and pressing the reset button for 2 secs resets everything. Well no joy there either.

Any suggestions as you guys seem to know your way around this piece of hardware.

By the way I havent got to the bottom of the failure of the PC yet either.

[Reply with Quote](#)

[walterkay](#)

Icrontic Regular

[walterkay](#)

27 Posts

16 Nov 2006, 5:28am

Quoting [hotpoco](#)

Now that the over-bright / too bright with visible retrace problem is solved, I have a white balance problem to solve. The image is too red.

So I tried the COLOR->EASY->Image Restoration (which requires a 30-minute warm-up), and voila! The white balance problem is now gone too!

My monitor is as good as new!

hotpoco

Success thanks to you! Hooked up my RS232 cable (looks same as yours, must be the same friendly Canadian vendor), never would have guess to short Rx Tx and launched winDAS. Selected to save the default.dat and computer locked up before the Save As dialogue box appeared. Great, now what. Crashed and relaunched computer and this time winDAS lets me save the .dat. Made some backup copies and launched Programmer's Notepad. A little bit of work to find word wrap and locate the G2 parameter but after that no problem. Default G2 on GDM-F500R was 199! Moved down to 160 and monitor looks like new again. Just a quick one- Where do you find the color restoration? I dont see it in winDAS. Fortunately my monitor didnt have the red hue (maybe weak gun in yours) but would like to have the resouce.

I wonder what continues to happen over time? Will we eventually program G2 down to 0?

Sony's solution was to offer to send me a refurb unit (running winDAS probably the extent of the refurb) for \$300 provided I shipped (yeah right, and found some way to pack this 80lb hulk) to San Diego, Phoenix service center expired some time ago.

Thanks again for all the contributions.

[Reply with Quote](#)

walterkay

Icrontic Regular

walterkay

27 Posts

17 Nov 2006, 2:34am

Re: Whoops - My Mistake - HELP!!!

Quoting **chilli_pepper**

hotpoco

Thanks for your advice, but I am still having trouble.

Basically, files now downloaded from the monitor are 10,068 bytes

The original settings file is 10,061 bytes

As these are the same i fear the original file may have been through a notepad change.

The original file will open in notepad and is fully legible

Any file downloaded from the moniter now is illegible in notepad, (its all strange characters) but fully legible in 'Programmers Notepad'

If i copy the original file and use the in notepad the byte size doesnt change, it seems they are already in ansi mode. ANSI is already present in the file type box, in the command.

However any file downloaded from the monitor, although illegible in notepad, if you use the file type is on Unicode, so I am guessing these files are in unicode. When I save them as ANSI format, they half in size, but then are illegible in Programmers Notepad and notepad and windas viewer.

My monitor is working, it seems, fine, and the G2 values have definety made it a lot better (lowered from 162 to 150).

I'm just prefer to get everything back to how if should be...

Can you help me?

I have attached 2 .dat files, although i have had to change the extension to get them to post, so just rename them.

p1110_original.dat - the original file i downloaded from the monitor, I fear is also corrupt

p1110_311006.dat - the file i have just downloaded from the monitor.

Please help me!


Thanks guys!

Ps. Just a little annoyed the guide pages still say to use notepad - maybe this should be changed, so no-one else makes this error!

Well, my .dat's have never been viewable in notepad, just wordpad, of course I edit only in Programmer's Notepad, and they download into the monitor without problem.

But, here's one of them configured for the P1110, you just need to verify and modify the values if necessary.

[Attached Files](#)

 P1110.zip (2.3 KB, 87 views)

[Reply with Quote](#)

REDMAN

Getting settled in

REDMAN

5 Posts

17 Nov 2006, 2:25pm

i was able to get the cover off my p1130, cable came in the mail, software seems to work. The only problem is that after i open my saved dat file with the viewer i dont get anything in the right window? i get the viewer list but nothing on the right window any help help would be nice. windows xp sp1 thanks

[Reply with Quote](#)

walterkay

Icrontic Regular

walterkay

27 Posts

19 Nov 2006, 5:28am

Quoting **REDMAN**

i was able to get the cover off my p1130, cable came in the mail, software seems to work. The only problem is that after i open my saved dat file with the viewer i dont get anything in the right window? i get the viewer list but nothing on the right window any help help would be nice. windows xp sp1 thanks

which viewer? try view>word wrap.

[Reply with Quote](#)


Page 12 of 20 [« First](#) [<](#) [2](#) [8](#) [9](#) [10](#) [11](#) **12** [13](#) [14](#) [15](#) [16](#) [>](#) [Last »](#) 

Similar Threads



Thread	Thread Starter	Forum	Replies	Last Post
Fun with Dell Tech support	khan	General Banter	32	4 Mar 2008 2:21pm
How Dell Treats The Customer	Park_7677	General Banter	38	7 Aug 2006 2:52am
Dell Laptop Power Supply: Broken Plug	rockston	General Hardware	1	4 Jul 2004 4:54am
User Group Sues Dell	SM-Bot	Technology Articles	0	27 Oct 2003 2:58am
just got a dell 1901fp	celcho	Graphics	4	29 Sep 2003 10:58pm

 [Icrontic Forums](#) > [Tech: Hardware](#) > [Graphics](#)

 **DELL P1110 monitor too bright**

[Search Icrontic](#)

Jump to **Graphics**

[Go](#)

[Today's Posts](#) - [Mark All Read](#) - [Contact Us](#) - [Icrontic.com](#) - [Archive](#) - [Top](#)

-- White Fedora

Current time: 2:15am (GMT)
Powered by vBulletin®
Copyright ©2000 - 2009, Jelsoft Enterprises Ltd.
Get [Vanilla](#) instead. Trust me.